

Klondike SNOWMOBILE ASSOCIATION

PRESIDENT'S MESSAGE

Year in review

A GOOD MIX OF OLD AND NEW BODES WELL



Mark Daniels
KSA President

The KSA AGM was held in December 2015 resulting in a couple of changes to the board of directors. Director Ron Leblanc and secretary/treasurer Phil Perrin stepped down. James Connor, previously a director, replaced Phil. Brad Milligan replaced Ron adding yet more youth to our otherwise greying board.

Retaining their positions are Harris Cox and Jeff Marynowski as directors, Jim Connor as vice-president and Mark Daniels as president. This is a good mix of old and new blood and bodes well for the year ahead.

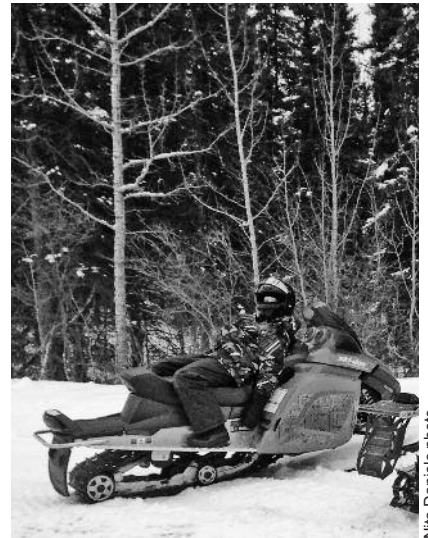
While the 2014/15 season wasn't a great one for snow, the KSA had a good year as an organization. We retained a healthy financial position due to the ongoing support from our corporate members and other supportive local businesses. Not enough can be said about the important contributions that the business community makes to the KSA. We'd be in dire straits if not for donations of labour, parts, materials, fuel and cash to keep us operating.

Speaking of operating funds and support, we also benefit greatly from our partnerships with the City of Whitehorse, Yukon Government through the Community Development Fund, federal government through their funding of the National Trails Coalition, the

Canadian Council of Snowmobile Organizations and the Trans Canada Trail.

Our grooming equipment is aging but is still quite serviceable thanks to ongoing support from the local dealers who maintain and repair our equipment for cheap or free. After watching the Yellowknife club successfully use a tracked Kubota RTV as a grooming tractor, we decided to follow suit and have applied for funding to get one ourselves. If approved, we'll get the package assembled this summer and be ready to groom with it next winter. Stay tuned as we'll need to do some fundraising to augment our grant application.

The 2014/15 membership remained **Continued on page 2 ►**



Nita Daniels photo

It's time for a rest stop on the trail.

Dawson City Sled Dawgs keep busy

by TIM GRENON

Another year of snowmobiling is upon us. But first, the board of the Dawson City Sled Dawgs would like to thank all of our members who took time out of their busy schedules to make the 2014/15 year a success. Through everyone's dedication and hard work, our club continues to grow. As well, we thank all of our local businesses

Continued on page 2 ►



YG photo

Caribou share their home with you. Be a respectful guest.

At the end of a great day of sledding in the backcountry, you get to return home. Caribou don't—the wilderness is their home. As a guest, you should be on your best behaviour. Stay on designated trails when travelling through caribou country.

Before you head out into the backcountry, pick up your free **MULTI-USE TRAIL GUIDE**. It will help you see wildlife while minimizing disturbance. Available from the Klondike Snowmobile Association, Environment Yukon, and snowmobile service businesses.



SNORIDERS

SPECIAL KLONDIKE SNOWMOBILE ASSOCIATION REPORT

► PRESIDENT'S MESSAGE *Continued from page 1*

steady at near-record levels. We continue to add benefits for our members without upping the fees. The best way to increase membership is by word of mouth so be sure to talk it up with your friends and neighbours.

Each year we try to take on one large construction project along with our regular maintenance program. This past year, we completed the outstanding work on the Crestview Bypass project from the previous summer and connected the south Whitehorse rural residential subdivisions to the Copper Haul Road. This project was a high priority for the KSA as well as the City because it provides an official out-and-away multi-use trail for the citizens in those areas. ■

► DAWSON CITY SLED DAWGS *Continued from page 1*

for your very generous sponsorships. As many of you will know, two of the main factors in having a successful non-profit organization are the hard work from volunteers and generous sponsorship from businesses and community members—two things the Sled Dawgs are very fortunate to have. The board always welcomes new members to come out and be a part of our club, to share their ideas in making outdoor recreation better, not just for snowmobiling but for all winter enthusiasts.

Preparations for the arrival of our American friends in this year's Trek Over the Top have begun. As always, we will be holding a poker run for our visitors, but would like to remind you that all are welcome. Registration will be at the Eldor-

ado Hotel from 11 a.m. to 12:30 p.m. on Saturday, March 5, 2016. This event is a great opportunity to come out and meet new people—not just from Alaska but from many of the lower 48 states. Be sure to give yourself enough time on the poker run to stop at the third card site to enjoy the bonfire and have a smokie and a hot chocolate provided free by the Sled Dawgs.

We do ask that regardless of your poker hand, please stop at the final card location, which is back at the Eldorado Hotel, to check in. This will help us ensure that everyone has returned safely.

Ever play Chicken-Shit Bingo? Come out and try it Dawson style! Watch a sled being dropped from a helicopter from 500 feet! Buy a numbered wooden stake for \$5, strategically place it in the drop zone and see if you're the lucky winner. The winner is determined by measuring the largest piece of sled debris to the closest upright wooden stake. The Sled Drop has become one of our most attended events. I am sure you can understand why.

The 11th annual Diamond Dempster Daze has been in the planning stages for some time now. We invite all families and friends to come up the scenic Dempster Highway to enjoy a day of riding in the Tombstone and Hart valleys. After a day of surfing down the valleys, climbing slopes and enjoying barbecued food provided free by our club, you can come on out to Diamond Tooth Gerties Casino to enjoy live entertainment, door prizes, bucket and 50/50 draws. You can also try your luck at any one of the gambling tables or be the next big winner on the slot machines! You must be 19 or older to attend the Gerties portion of this event.

The Dawson City Sled Dawgs, although a snowmobile club, support all forms of out-

door recreation. We would like to ask that when you are out enjoying all that our beautiful territory has to offer, always be safe and follow and obey trail signs. When going out alone, be sure to let someone know where you are going and when you will be back. Always be aware of your surroundings.

With our warm temperatures this year, be sure to use extra caution when on or crossing frozen water (rivers, ponds, etc.). Always be respectful of wildlife and keep a safe distance. When out riding, be sure to always wear proper safety gear. Have fun, ride safe, and ride sober! ■

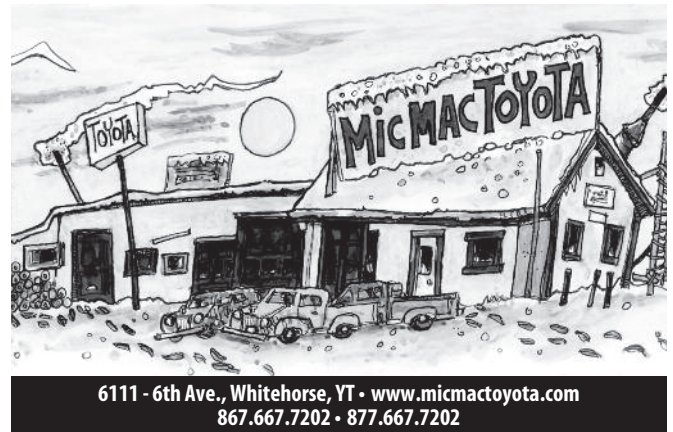
City's trail network is world-class

by DOUGLAS HNATIUK and
SABINE SCHWEIGER

The City of Whitehorse approved its first Trail Plan in 1998, and has been working diligently on developing a world-class recreational and commuter trail network. The initial inventory captured over 700 kilometres of trails that had developed more or less organically over many decades and for many purposes.

Today the City has over 750 kilometres of trails, covering the entire 421 square kilometres within City boundaries. The trails include a wide range of uses (e.g. non-motorized, multi-use, skiing, mountain biking) and construction standards (e.g. natural surface, paved, single track, trick-props for biking, on-road).

In 2007, the trail plan was updated to address specific trail needs articulated by stakeholder groups and community representatives. The council-approved plan included a detailed implementation plan ►



SNORIDERS

SPECIAL KLONDIKE SNOWMOBILE ASSOCIATION REPORT

► and schedule to address trail interconnectivity, urban commuter and public transportation linkages, and the maintenance of the trail network in as natural and sustainable a state as possible.

The City of Whitehorse has established a neighbourhood task force working group model (comprised of trail stakeholder groups and community associations) to provide a forum to discuss and explore all trail issues. These task force working groups not only look at the trail needs and issues within their specific neighbourhood, but also determine effective and efficient linkages between community neighbourhoods. This ensures that interconnectivity is being achieved, providing trails for both local recreational use and functional commuter purposes.

Likewise, trail maintenance is a partnership between the City and dedicated community groups. The Klondike Snowmobile Association has an agreement with the City to groom and maintain specific trails, not only for motorized use, but for the benefit of winter walking and cycling. Contagious Mountain Biking Club partners with the City to build and maintain trails, bridges and structures for mountain biking and other non-motorized activities.

The wilderness trails form a portion of the transportation network in the City, and must be integrated with other transportation modes. Where possible, trailheads and trail junctions are planned to be in the vicinity of City transit stops and urban pedestrian and

cycling networks, enabling trail users options when considering alternative transportation methods to and from their destination. Trailhead kiosks, way-finding signage, trail maps and online tools help trail users navigate the trail system. With the increase in online tools and mobile devices, the public is also able to actively participate in trail management—reporting trail maintenance issues, wildlife sightings and posting suggested routes with key attractions.

Over the decades, the Whitehorse trail network has evolved and expanded from the classical definition of trail; working with engineers, planners and operations, the network is developing into a four-season commuter network including redesigned roadways with primarily cycling infrastructure. This encourages active transportation in the community and provides alternative commuting routes.

The City of Whitehorse has spent considerable time and effort to advance the development of the trail network in Whitehorse with the aim to accommodate all types of trail users summer and winter—motorized, self-propelled and pedestrian. This would not have been possible without the partnerships and alliances that the City of Whitehorse has developed with other government agencies, stakeholder groups, clubs, organizations and funding sources.

This trail framework has resulted in the City of Whitehorse having a premier trail destination that is internationally recognized. ■

Membership Form

Time to renew your KSA membership. Do you know someone who should become a member?

Name _____

Address _____

Phone _____

Email _____

Membership dues for the 2015/2016 season:
 Single \$20 Family \$30 Corporate \$105
 Gold Corporate \$315 including GST

Please make cheques payable to:
Klondike Snowmobile Association,
4061 - 4th Ave., Whitehorse, YT Y1A 4H1

Membership Benefits

- KSA membership card
- KSA newsletters (four per year)
- KSA licence plate and decals
- Input into the development of KSA policy
- Assistance with problems, projects and trail development initiatives in your area
- A strong, unified voice with government and other agencies
- A guarantee that a team of volunteers are working year-round to enhance and promote multi-use trails throughout the Yukon Territory
- Four free issues of *SnoRiders* magazine
- 6% off gas at Tags 4th Ave. Whitehorse (not valid during gas wars)
- 10% off food at Trails North (excluding alcohol)
- 10% discount at McDonald's Restaurants Whitehorse (not valid with other offers)
- Access to Last Run Lounge at Mount Sima (please, no drinking and sledding)
- 10% off at Klondike RV Rentals - www.klondikerv.com
- 10% off at Mark's on regularly priced merchandise (separate card required, which is issued with membership)
- 20% off at Sandor's (Chilkoot Mall) on regularly priced goggles, gloves, toques, snowpants, jackets and snowboards
- Special prices on Haber Vision sunglasses and goggles - see www.habervision.com for details. Member code is "CCSO"
- 10% off at Mt. Lorne Bed and Breakfast - www.klondikerv.com
- Special rates at Choice Hotels - see www.choicehotels.ca/ccso for details. Only available for online bookings.
- Special snowmobiler rates at the Atlin Inn
- Corporate Members get a link on our website
- Gold Corporate Members - 2 free ads in KSA newsletters
- 10% off snowmobile rentals at Yukon Wide Adventures



If you have comments, photos or story ideas for the Klondike Report, send them to:
Mark Daniels, Klondike Snowmobile Association
 4061 - 4th Ave., Whitehorse, YT Y1A 4H1
 Phone 867-667-7680 • Email: klonsnow@ykn.net

KSA Members receive
10% OFF
 YOUR MEAL
 when you present your membership card

i'm lovin' it™ 4227 4th Ave., Whitehorse • 867-668-3502

This offer is only valid at participating McDonald's Restaurants in Whitehorse and subject to change at any time.



SNOWMOBILE OPERATOR COURSES AND ATV & UTV RIDER COURSES

- 3 certified instructors
- Nationally recognized by the Canada Safety Council
- All courses WCB approved

MAIN STREET DRIVING SCHOOL

7213 - 7th Ave., Whitehorse, YT
 867-633-2355 • ravens@klondiker.com

KSA corporate members

A special thank you goes out to all the businesses that help support the Klondike Snowmobile Association via corporate memberships! For more info on becoming a corporate member, please see the Become a Member page on our website: ksa.yk.ca.

- Alpine Aviation - Whitehorse
- Alsk Valley Contracting - Whitehorse
- Atlin Mountain Inn - Atlin, BC
- Bombardier Recreational Products - Sherbrooke, QC
- Braeburn Lodge - Braeburn
- Brewery Bay Chalet - Atlin, BC
- Canada Flooring - Whitehorse
- Capital Helicopters - Whitehorse
- Centennial Motors - Whitehorse
- Checked Flag Recreation - Whitehorse
- City of Whitehorse
- Fireweed Helicopters - Whitehorse
- Klondike Visitors Association - Dawson City
- Locksmith Services - Whitehorse
- Nomad Air - Whitehorse
- Quality Bearing - Whitehorse
- SnoRiders* magazine - Cranbrook, BC
- Territorial Contracting - Whitehorse
- Tourist Industry Association - Whitehorse
- Trails North Car & Truck Stop - Whitehorse
- U-Brew Yukon - Whitehorse
- Village of Mayo
- Wilderness Tourism Association - Whitehorse
- Workforce Information & Networking Hub - Whitehorse
- Yukon Alpine Association
- Yukon Alpine Heliski
- Yukon Avalanche Association
- Yukon Meat and Sausage - Whitehorse
- Yukon Quest
- Yukon Trappers Association - Whitehorse
- Yukon Wide Adventures - Whitehorse
- Corporate Gold members:**
- Main Street Driving School - Whitehorse
- McDonald's Restaurants - Whitehorse
- Mic Mac Toyota - Whitehorse
- Safe Trails North Training Services - Whitehorse
- Triggs Family - Whitehorse
- Yukon Honda - Whitehorse
- Yukon Yamaha - Whitehorse

A long-term vision for Chadburn Lake Park

by JOHN GLYNN-MORRIS

The 2010 Official Community Plan identified five new parks to reflect environmental and recreational values: Chadburn Lake, McIntyre Creek, Paddy's Pond/Ice Lake, McLean Lake and Wolf Creek. The 2014 Regional Parks Plan provided a guiding framework for developing management plans for each of the five parks. The City is now developing a management plan for Chadburn Lake Park, the biggest park in a Canadian municipality.

The plan will provide a long-term vision for the park area and develop a framework for how the park will be managed. Specifically, the management plan will:

- identify recreational, environmental and heritage values within the park, and develop a framework for how we will manage these values;
- provide attainable implementation items to help achieve the vision for the park;
- identify strategic partnerships to help implement items in the plan; and
- provide direction on how the City should evaluate proposals for new or expanded uses in the park, and how the City should manage new uses or changes in intensity of uses.

This process is an opportunity for Whitehorse residents to think forward: what do we want the future of Chadburn Lake Park to look and feel like? Specifically: how should the City manage Chadburn Lake Park's recreational, heritage and environmental values while respecting individual and community needs and rights?

In November and December, the City and



Nita Daniels photo

Sledders enjoy a McIntyre Valley adventure.

a local consultant team conducted background research and interviewed over 35 key stakeholder organizations and government partners.

The City and the consultant team will collect information received during the process and share a "what was heard" document before developing a draft management plan. In the spirit of improving how the City engages with citizens, the draft will be accompanied by a document explaining how the City considered public input in developing the draft. Later this spring, the public will have the opportunity to comment on the draft plan before it is finalized by council (hopefully before the summer).

Can you participate online? Yes! You are invited to share input by visiting the crowdsourcing map I Heart Chadburn that has been set up for this project.

What about existing trails and trail use decisions? The intent of this planning process is not to review previously made trail decisions. However, this process is an opportunity to consider how we can enhance the user experience on our existing trail network in Chadburn Lake Park.

Thanks to Mark Daniels for participating in the process on behalf of KSA. For more information, please visit www.whitehorse.ca/chadburn.

like **sledding?**
so do we.

More of what you love online. For snowmobilers in Western Canada. Sign up for a free email newsletter today. Log on and enjoy the ride.

www.snoriderswest.com

Don't forget to check out the digital edition of your favourite snowmobiling magazine at www.snoriderswest.com/emagazine

**SAFETY TRAINING FOR
SNOWMOBILE AND ATV/UTV**

- WCB recognized operator courses
- Workplace and recreational training available
- Mobile training services available to meet your needs

Safe Trails North Training Service
Canada Safety Council/BC Snowmobile Federation Courses • Professional Instruction Services
Whitehorse, YT • 867-335-1932 • safetrails@elr.ca